

SPACE AVAILABLE  
3323 Concord Road  
Suite 4  
Lafayette, Indiana



Now Leasing  
2,500 SF Office/Warehouse  
Suite 4  
\$8.50 / SF / NNN

**ALAN WHITE**  
A G E N C Y

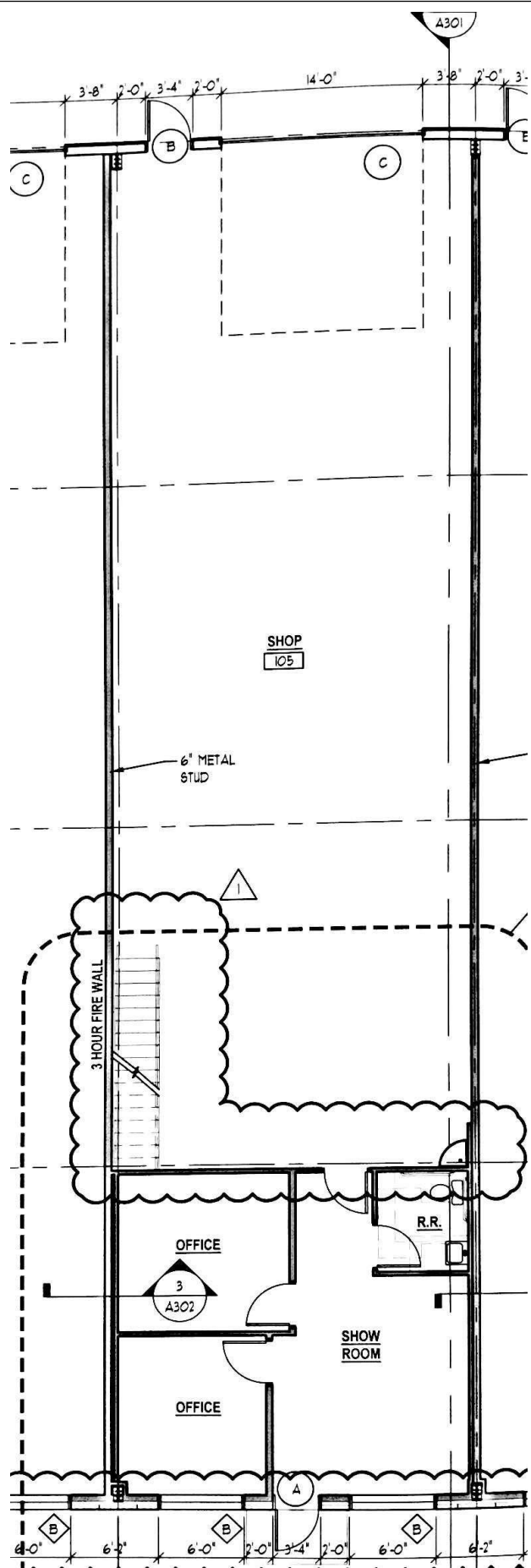
COMMERCIAL REAL ESTATE  
711 S. 9th Street, Suite 1  
Lafayette, IN 47905  
[www.AlanWhiteAgency.com](http://www.AlanWhiteAgency.com)

---

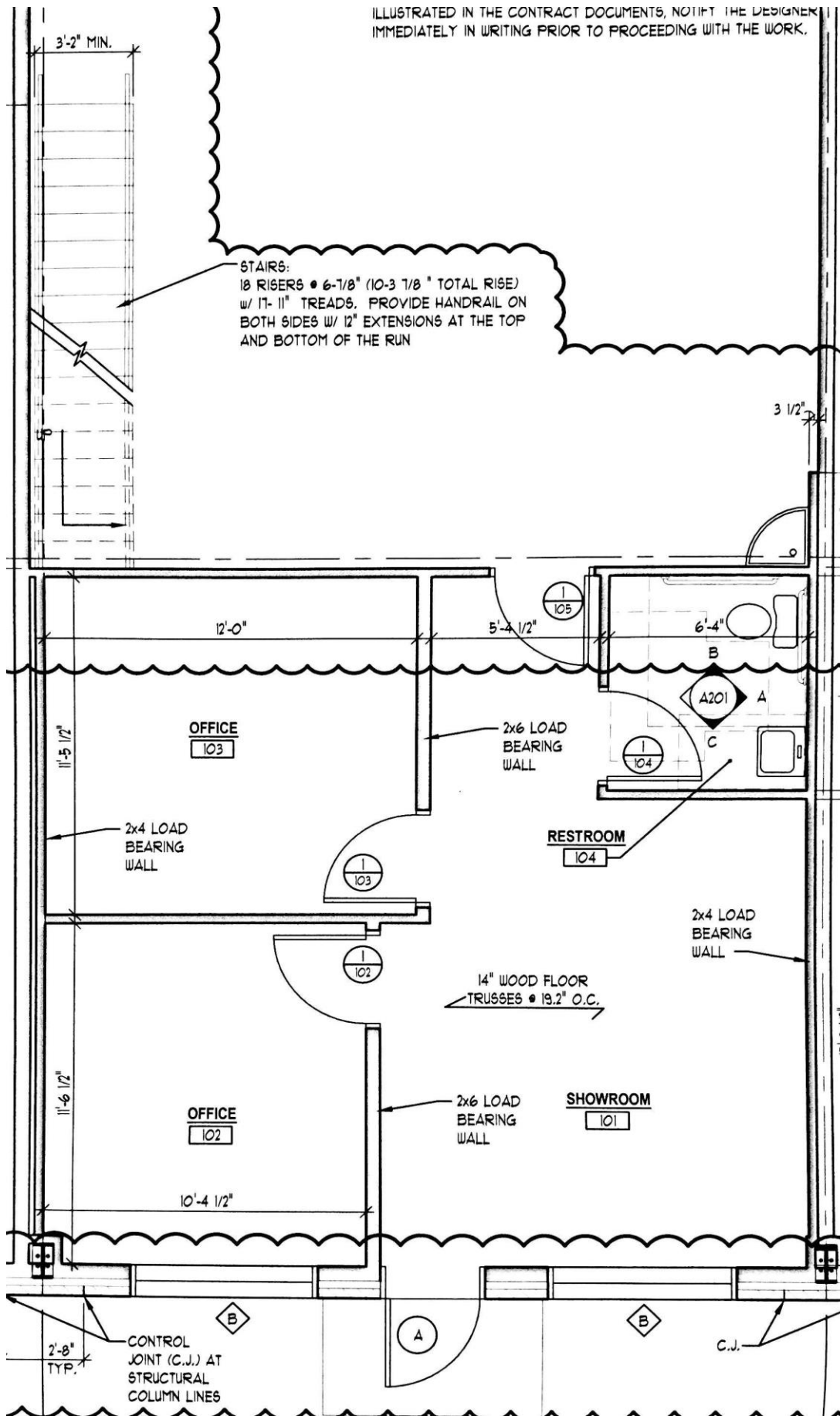
For More Information Contact:  
**Alan D. White**  
(765) 423-1515

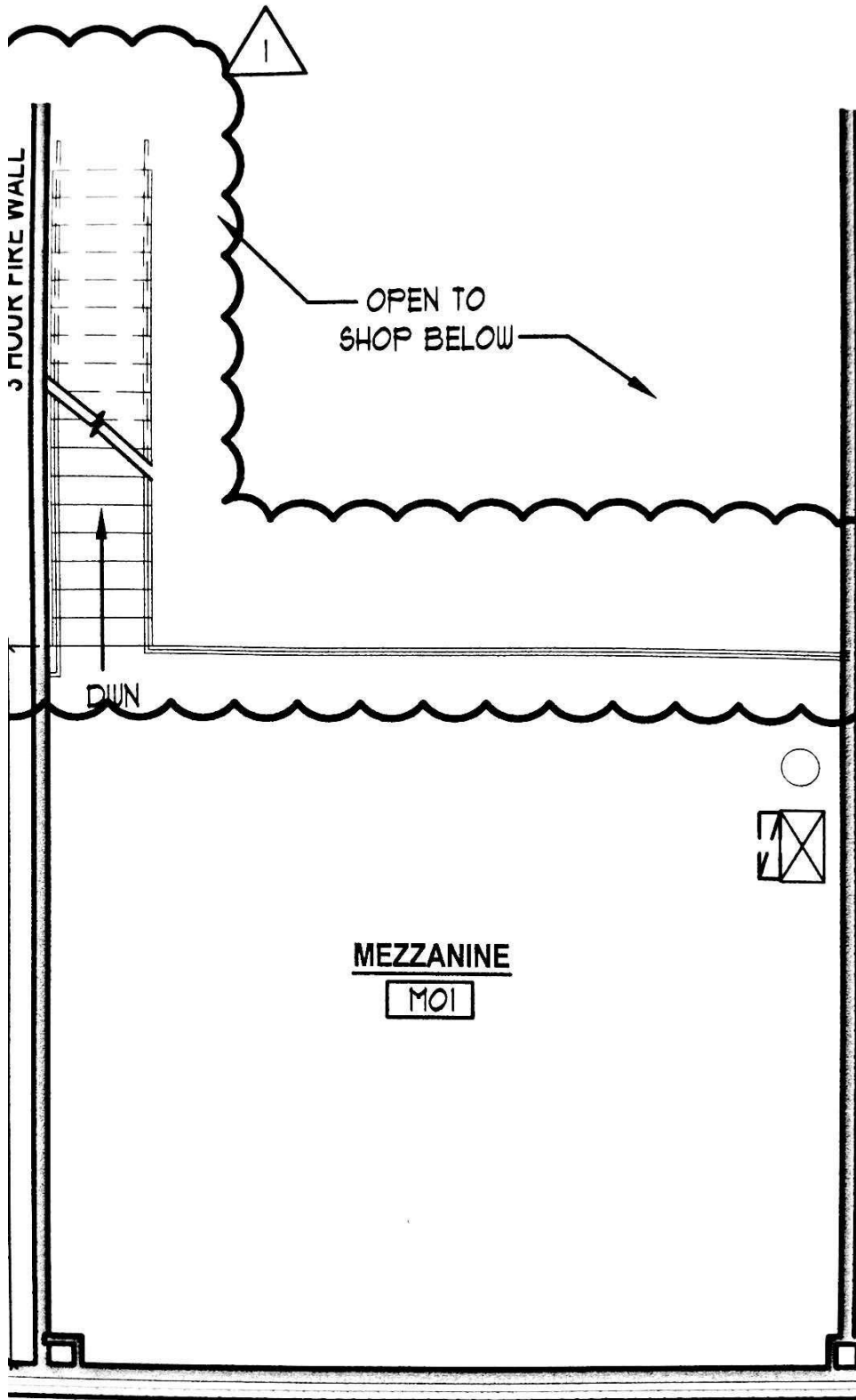
- Very Nice Commercial Suite on Concord Road
- 2,500 SF Suite
- 14'X14' rear overhead door
- Already built out
- Abundant Parking
- Located South of Brady Lane on Concord Road
- \$8.50 / SF / NNN
- NNN estimated at \$3.50 / SF
- Minimum 3 year lease term
- Zoned I-3

[www.alanwhiteagency.com](http://www.alanwhiteagency.com)



ILLUSTRATED IN THE CONTRACT DOCUMENTS, NOTIFY THE DESIGNER IMMEDIATELY IN WRITING PRIOR TO PROCEEDING WITH THE WORK.





# MEZZANINE PLAN

SCALE: 1/8" = 1'-0" (24"x36" SHEET)